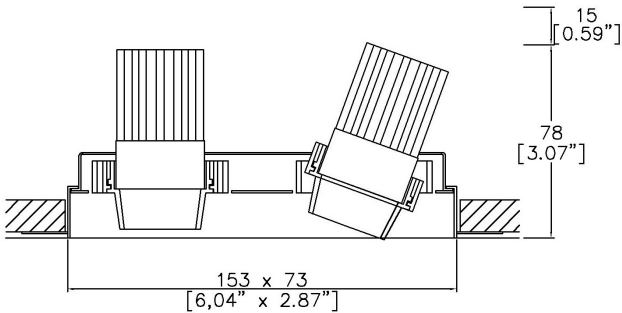


# ProSpex Gimbal Micro Twin



153 x 73mm (6.04" x 2.87") overall trim dimension.  
Available with standard trim kit or plaster-in kit for flush appearance. Family of matching products also available. Required depth height + 15mm^



352-LED-TL  
Cut-out 77 x 157mm

LED Source	LED35/2	LED35/2	LED35/2
CCT	3000K	3000K	3000K
Drive Current	350mA	350mA	350mA
Power inc Driver	7.4W	7.4W	7.4W
Beam Angle	15°	24°	36°
Delivered Lumens	427	380	396
Delivered Intensisty cd	3082	1942	1315
Efficacy lm/w	58	51	54
Forward Volt	18V	18V	18V
CRI	≥90 CRI	≥90 CRI	≥90 CRI

Project Ref: \_\_\_\_\_

Location Ref: \_\_\_\_\_

Fixture Order Code: 

352-LED-TL

 -  -  -  -

Fixture

352-LED-TL

Gimbal Micro Twin Trimless with LED35

Gimbal Finish

WH  
BK  
RAL

White  
Black  
Custom RAL Colour\*

Coverplate Finish

WH  
BK  
RAL

White  
Black  
Custom RAL Colour\*

Plaster Trim Finish

WH  
BK  
RAL

White  
Black  
Custom RAL Colour\*

Emergency

E  
ED  
ES

Maintained 3hr Emergency  
Maintained 3hr DALI Self Test  
Maintained 3hr Self Test

LED Order Code: 

LED35/2

 -  -  -

LED

LED35/2

LED35 GEN2

CCT

927  
930  
940

90 CRI 2700K  
90 CRI 3000K  
90 CRI 4000K

Beam

15°  
24°  
36°

15°  
24°  
36°

Protocol

S  
A  
P  
D  
B

Non-Dim  
Analogue (0-10v)  
Phase  
DALI  
Bluetooth\*\*



Honeycomb Louvre



Diffusing Lens



Frosted Lens



Heavy Spread Lens



Linear Spread Lens



Warm Tone

Accessories Order Code:

- Louvre/Lens
- LS45 Honeycomb Louvre
  - LSCC Warm Tone Lens
  - LSUV UV Lens
  - LSDF Diffusing Lens
  - LSFR Frosted Lens
  - LSLS Linear Spread Lens
  - LSHS Heavy Spread Lens

Technical Details

\*Custom RAL code must be specified. Custom RAL colours can increase prices and lead times

Dimming. Whilst Lucent can offer the majority of its luminaires with various dimming options, it remains the responsibility of the specifier/installer to check and ensure compatibility of any control equipment used. Additional cabling may be required depending on the dimming protocol specified.

\*\*Bluetooth (wireless) is the communication method. The exact dimming protocol must be confirmed to allow the selection of suitable drivers or bluetooth devices.

^ Depth indicated is the minimum recess depth for the luminaire with a remote mounted LED driver. Installing a driver through either the luminaire cut-out or installation kit may require additional recess depth, please refer to the relevant luminaire installation instructions for further details.Data correct at time of publishing

First Fix Requirement. Luminaire comprised of fixture body with ceiling trim and installation kit, which is to be fitted into the ceiling once finished. Ensure correct alignment of the installation kit before final assembly (see luminaire instllation instructions for details)

IP Rating. Tested from underside of the ceiling

It is the policy of Lucent Lighting to continually review and improve its products and therefore reserve the right to change any details of product or withdraw specifications without prior notice.

Luminaires designed to comply with EN60598 and all other standards.

This specification sheet superseded all previous versions.

All intellectual property rights pertaining to the product described above and to this document are owned by or licensed to Lucent Lighting Ltd.

We reserve the right to take whatever action is necessary to protect those intellectual property rights.

Please notify Lucent Lighting Ltd of any inaccuracies immediately. E&OE

## Light efficiency:

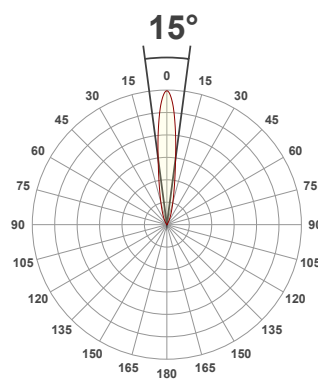
**58 Lumen/Watt**

## Light quality:

**CRI: 92.1**

## Color temperature:

**3000 K**



## Product name:

**Gimbal Micro Element - LED35 GEN2, 3000K, 15°, 350mA**

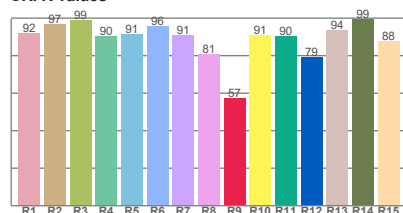
## Item number:

**Gimbal Micro Element-LED35/2-30-15-350mA**

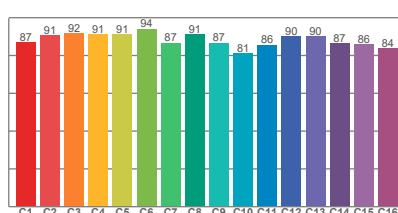
**Delivered information for above fixture and LED combination.**

**Output: 427 Lumen Peak intensity: 3082 cd Power consumption: 7.4**

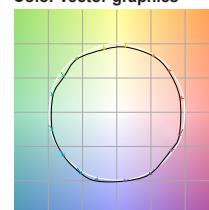
CRI R values



TM30 C Values

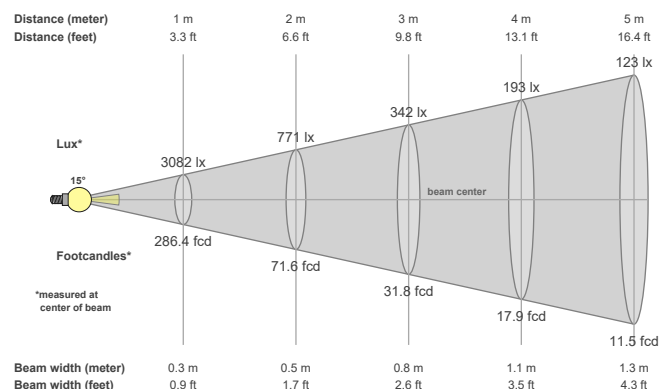


Color vector graphics



Color temperature	Color rendering index	Red component	Color fidelity	Color gamut	Color quality scale	Color coordinate cie 1931	Color coordinate cie 1931	Color coordinate	Color coordinate	Color diviation from black body
CCT	CRI	CRI R9	TM30 Rf	TM30 Rg	CQS	x	y	u	v	Δuv
3000 K	92.1	57.2	88.5	95.6	90.2	0.437	0.404	0.249	0.349	0.0013

## Beam details



## Beam angels

Beam angle 50%	Field angle 10%	Cutoff angle 2,5%
15°	39°	59.6°

## Beam intensities

Peak intensity	Int. ratio in 120° cone	Int. ratio in 90° cone
3082 cd	99.1%	98.3%

## Beam intensities from 1-20m

1m	2m	3m	4m	5m	6m	7m	8m	9m	10m	11m	12m	13m	14m	15m	16m	17m	18m	19m	20m
3.3ft	6.6ft	9.8ft	13.1ft	16.4ft	19.7ft	23ft	26.2ft	29.5ft	32.8ft	36.1ft	39.4ft	42.7ft	45.9ft	49.2ft	52.5ft	55.8ft	59.1ft	62.3ft	65.6ft
3082lx	771lx	342lx	193lx	123lx	86lx	63lx	48lx	38lx	31lx	25lx	21lx	18lx	16lx	14lx	12lx	11lx	10lx	9lx	8lx
286.4fcd	71.6fcd	31.8fcd	17.9fcd	11.5fcd	8fcd	5.8fcd	4.5fcd	3.5fcd	2.9fcd	2.4fcd	2fcd	1.7fcd	1.5fcd	1.3fcd	1.1fcd	1fcd	0.9fcd	0.8fcd	0.7fcd

The above information is for 3000K colour temperature, for specific module information please see LED spec located on our website

For information regarding other colour temperatures please use the following factors for lumen output and candelas:

2700K = 0.944

4000K = 1.065

## Light efficiency:

**51 Lumen/Watt**

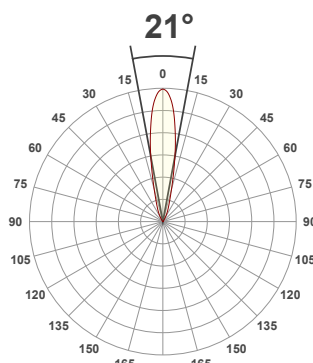
## Light quality:

**CRI: 92.1**

## Color temperature:

**3000 K**

**Output: 380 Lumen    Peak intensity: 1942 cd    Power consumption: 7.4**



## Product name:

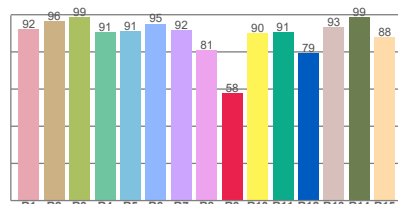
**Gimbal Micro Element - LED35 GEN2, 3000K, 24°, 350mA**

## Item number:

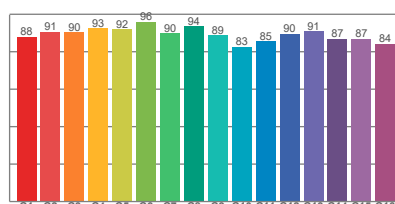
**Gimbal Micro Element- LED35/2-30-24-350mA**

**Delivered information for above fixture and LED combination.**

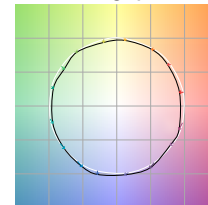
**CRI R values**



**TM30 C Values**

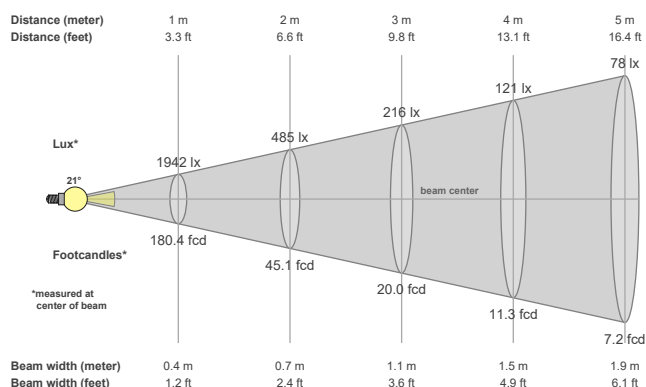


**Color vector graphics**



Color temperature	Color rendering index	Red component	Color fidelity	Color gamut	Color quality scale	Color coordinate cie 1931	Color coordinate cie 1931	Color coordinate	Color coordinate	Color deviation from black body
CCT	CRI	CRI R9	TM30 Rf	TM30 Rg	CQS	x	y	u	v	Δuv
3000 K	92.1	57.8	89.3	96.9	90.2	0.437	0.404	0.250	0.348	0.0005

## Beam details



## Beam angles

Beam angle 50%	Field angle 10%	Cutoff angle 2,5%
21°	45.4°	63.7°

## Beam intensities

Peak intensity	Int. ratio in 120° cone	Int. ratio in 90° cone
1942 cd	99.2%	98.2%

## Beam intensities from 1-20m

1m	2m	3m	4m	5m	6m	7m	8m	9m	10m	11m	12m	13m	14m	15m	16m	17m	18m	19m	20m
3.3ft	6.6ft	9.8ft	13.1ft	16.4ft	19.7ft	23ft	26.2ft	29.5ft	32.8ft	36.1ft	39.4ft	42.7ft	45.9ft	49.2ft	52.5ft	55.8ft	59.1ft	62.3ft	65.6ft
1942lx	485lx	216lx	121lx	78lx	54lx	40lx	30lx	24lx	19lx	16lx	13lx	11lx	10lx	9lx	8lx	7lx	6lx	5lx	5lx
180.4fcd	45.1fcd	20fcd	11.3fcd	7.2fcd	5fcd	3.7fcd	2.8fcd	2.2fcd	1.8fcd	1.5fcd	1.3fcd	1.1fcd	0.9fcd	0.8fcd	0.7fcd	0.6fcd	0.6fcd	0.5fcd	0.5fcd

The above information is for 3000K colour temperature, for specific module information please see LED spec located on our website

For information regarding other colour temperatures please use the following factors for lumen output and candelas:

2700K = 0.944  
4000K = 1.065

## Light efficiency:

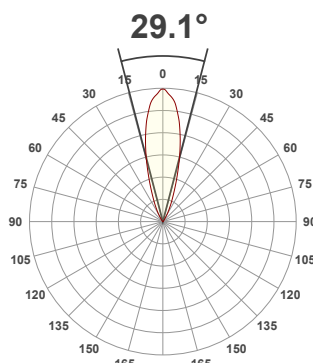
**54 Lumen/Watt**

## Light quality:

**CRI: 91.5**

## Color temperature:

**3000 K**



## Product name:

**Gimbal Micro Element - LED35 GEN2, 3000K, 36°, 350mA**

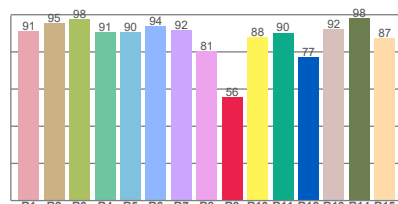
## Item number:

**Gimbal Micro Element-LED35/2-30-36-350mA**

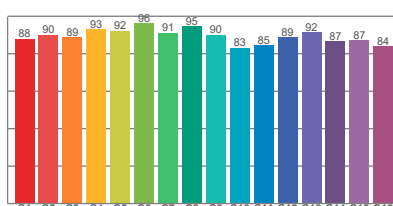
**Delivered information for above fixture and LED combination.**

**Output: 396 Lumen Peak intensity: 1315 cd Power consumption: 7.4**

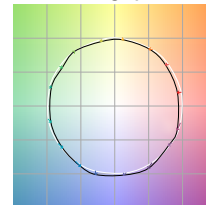
CRI R values



TM30 C Values

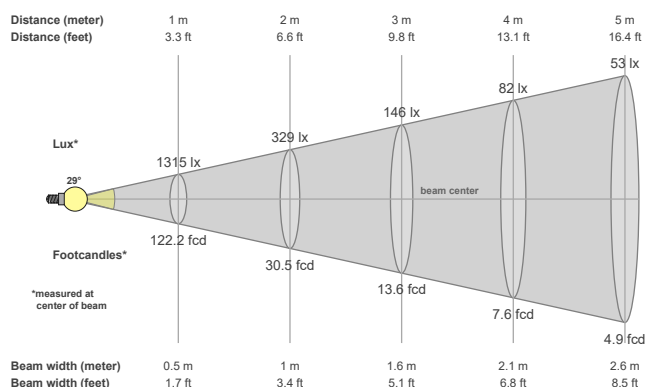


Color vector graphics



Color temperature	Color rendering index	Red component	Color fidelity	Color gamut	Color quality scale	Color coordinate cie 1931	Color coordinate cie 1931	Color coordinate	Color coordinate	Color deviation from black body
CCT	CRI	CRI R9	TM30 Rf	TM30 Rg	CQS	x	y	u	v	Δuv
3000 K	91.5	55.5	89.4	97.6	89.8	0.437	0.404	0.249	0.348	0.0007

## Beam details



## Beam angles

Beam angle 50%	Field angle 10%	Cutoff angle 2,5%
29.1°	54.3°	69.6°

## Beam intensities

Peak intensity	Int. ratio in 120° cone	Int. ratio in 90° cone
1315 cd	99.2%	98.1%

## Beam intensities from 1-20m

1m	2m	3m	4m	5m	6m	7m	8m	9m	10m	11m	12m	13m	14m	15m	16m	17m	18m	19m	20m
3.3ft	6.6ft	9.8ft	13.1ft	16.4ft	19.7ft	23ft	26.2ft	29.5ft	32.8ft	36.1ft	39.4ft	42.7ft	45.9ft	49.2ft	52.5ft	55.8ft	59.1ft	62.3ft	65.6ft
1315lx	329lx	146lx	82lx	53lx	37lx	27lx	21lx	16lx	13lx	11lx	9lx	8lx	7lx	6lx	5lx	5lx	4lx	4lx	3lx
122.2fcd	30.5fcd	13.6fcd	7.6fcd	4.9fcd	3.4fcd	2.5fcd	1.9fcd	1.5fcd	1.2fcd	1fcd	0.8fcd	0.7fcd	0.6fcd	0.5fcd	0.5fcd	0.4fcd	0.4fcd	0.3fcd	0.3fcd

The above information is for 3000K colour temperature, for specific module information please see LED spec located on our website

For information regarding other colour temperatures please use the following factors for lumen output and candelas:

2700K = 0.944  
4000K = 1.065